

PART OF N.E. 1/4 OF SECTION 16, T.6 N., R.1 W., S.L.B. & M.  
**SHERWOOD PARK ADDITION No 5**

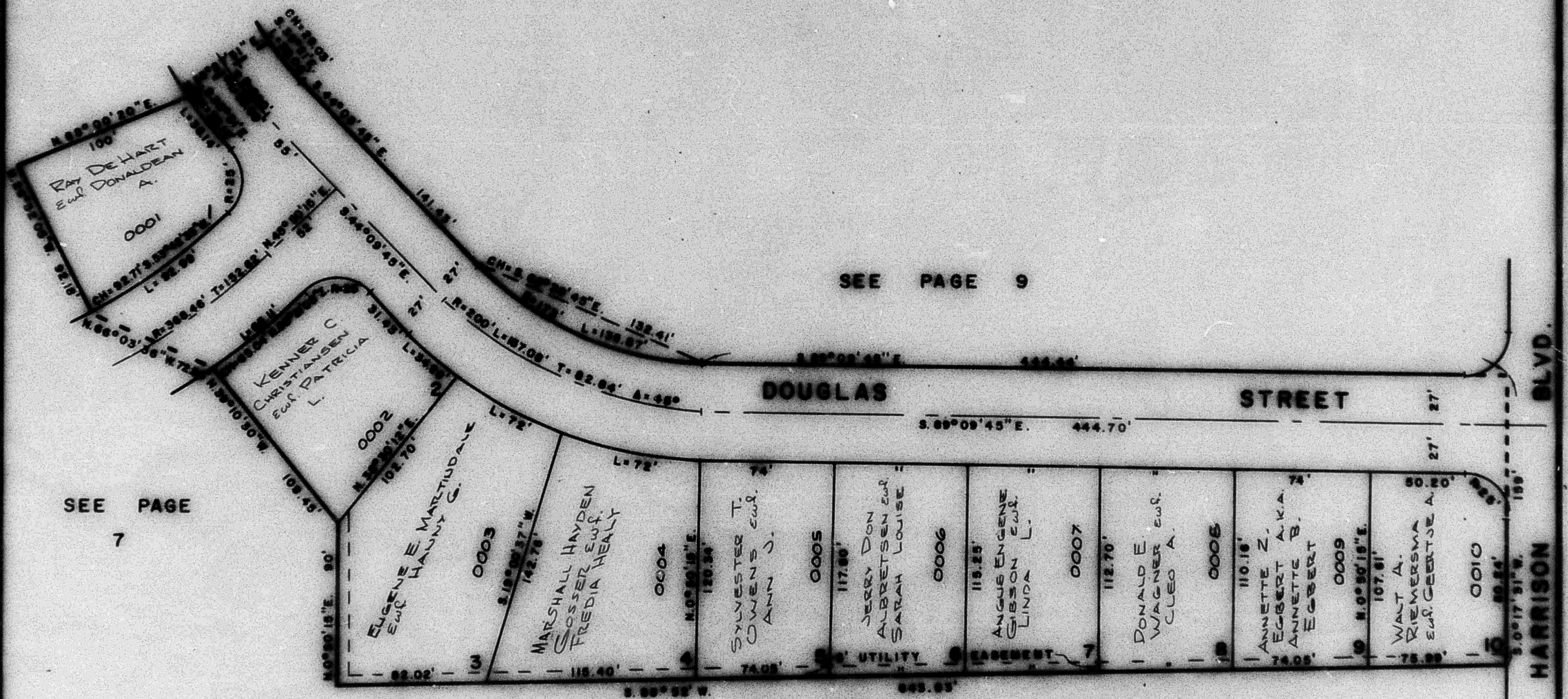
8

TAXING UNIT: 25

IN OGDEN CITY

PREFIX: 12-008

SCALE 1" = 50'



SEE PAGE  
7

SEE PAGE 9

SEE PAGE 2

NOTE: FOR COMPLETE ENG. DATA,  
SEE ORIG. PLAT IN BOOK 11, PAGE 9